



Air Powered
**Flow Valves
& Applicators**



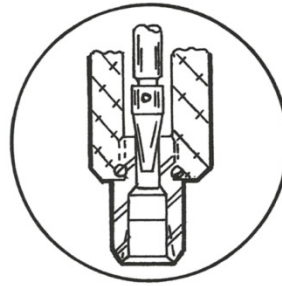
flow valves

**Air Operated Directional Flow Valves
With Positive Shut-off Action**

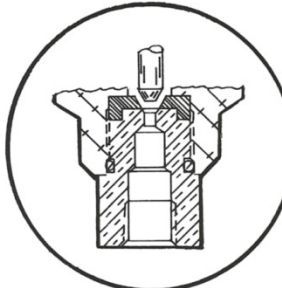
MODEL N-388 AND N-550 SERIES are constructed of aluminum and steel and are precision machined in the Jesco plant. These shut-off valves are ideal for grouping on a production fixture where it is necessary to have an equal flow of material to several locations. The long taper on the internal valve seat allows for accurate orifice metering when cycling with a timer control.

THE N-961 SERIES are of steel construction and were designed for use as a positive shut-off directional oil flow valve, operating at relatively high system pressure. The valve is available with a "soft seat design".

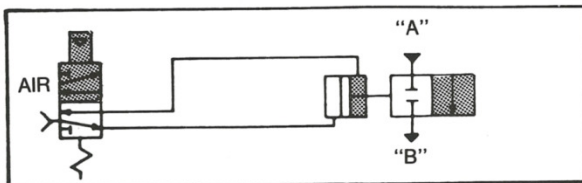
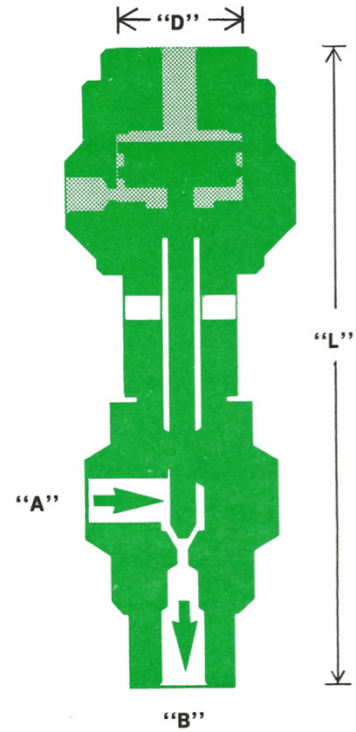
THE N-963 SERIES are compact directional flow valves of brass and aluminum construction. Ideal for programming flow in a sophisticated flow system. The soft seat design is normally specified for processing low viscosity materials.



N-388, N-550 & N-961



N-963-A



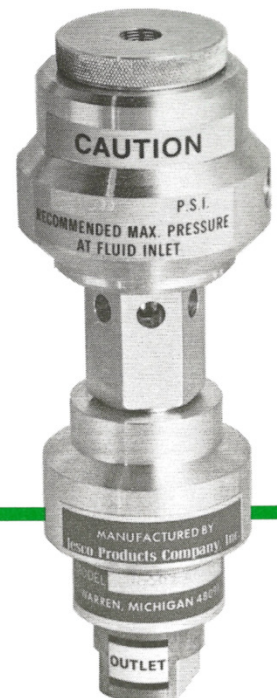
TYPICAL CIRCUIT



Model N-388 & N-550



Model N-961 Series



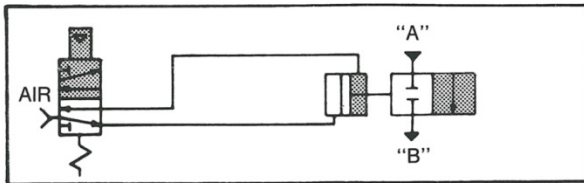
Model N-963 Series

flow valves



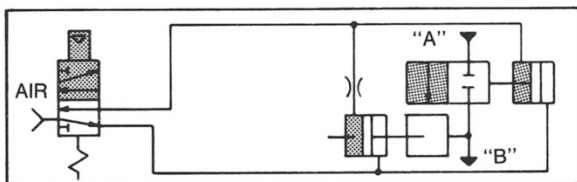
**Positive Shut-off Valves
Designed for Mastic, or Sealer Materials**

MODEL N-500 SERIES are constructed of steel components for use as inline material shut-off valves. This valve lends itself to grouping on automated production fixtures. Designed for moderate flow rates and suited for a wide range of materials.

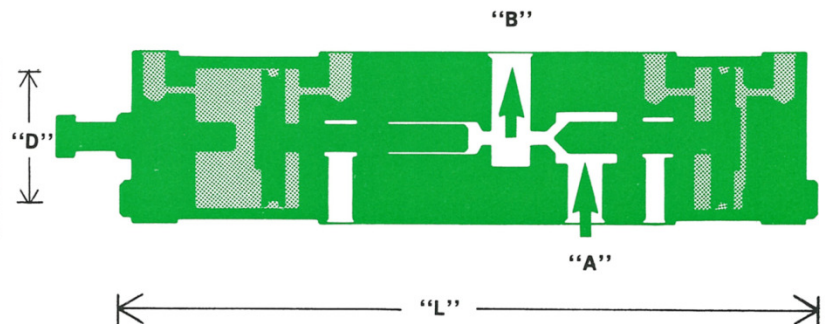
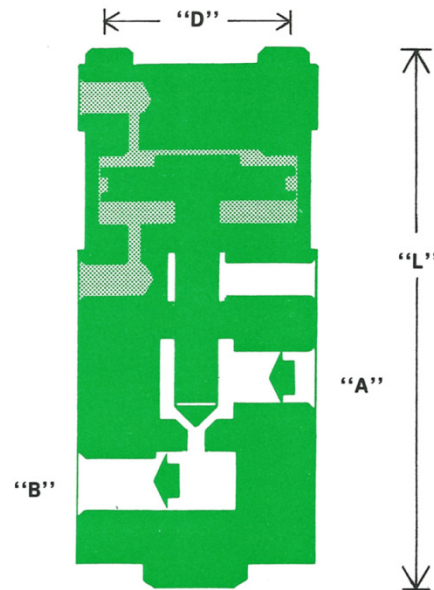


N-500 Typical Circuit

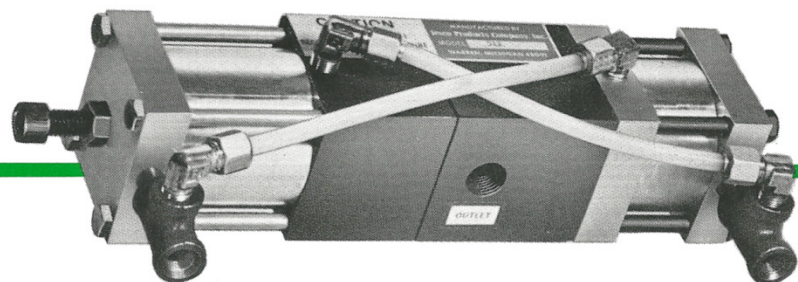
MODEL N-511 SERIES has a draw back feature. This unique Jesco valve is the basic N-500 flow valve, equipped with a piston installed in the downstream side that draws back upon closing of the main valve. This action causes a reverse material displacement, providing a clean bead "back away" on various flow applications.



N-511 Typical Circuit



Model N-500



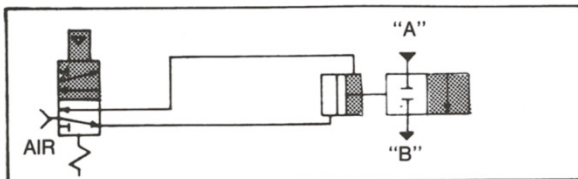
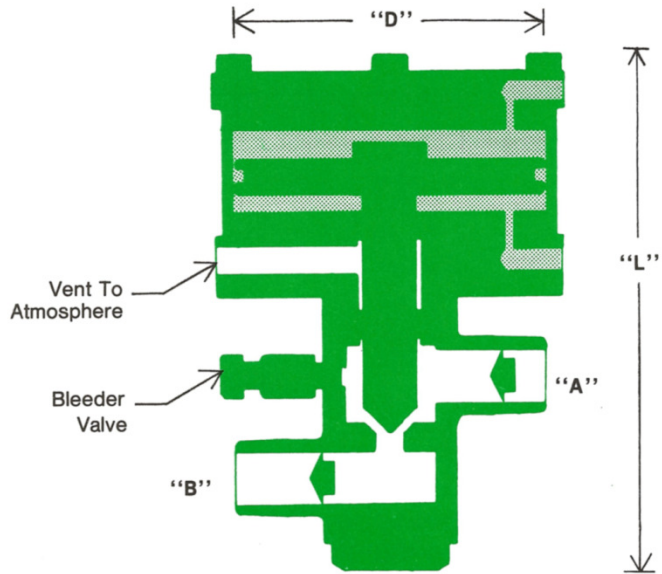
Model N-511

flow valves

Dependable High Production Valves
For Controlling the Flow of Liquid or Paste

N-372, N-372-3, AND N-372-45 SERIES are rugged, inline material shut-off valves constructed of hardened steel components. Three sizes of shut-off air cylinders are offered for positive shut-off at various system back pressures (see order chart). High volume flow rates can be obtained with a minimum pressure drop through the valve. These valves were designed for controlling the flow of sealers, adhesives and mastics to automated fixtures in high volume production applications.

A material bleeder vent valve is provided for initial priming of the system and also for bleeding system pressure. The air cylinder portion is divorced from the material chamber by means of "vent to atmosphere" ports. This feature is common to all Jesco flow valves and applicators.



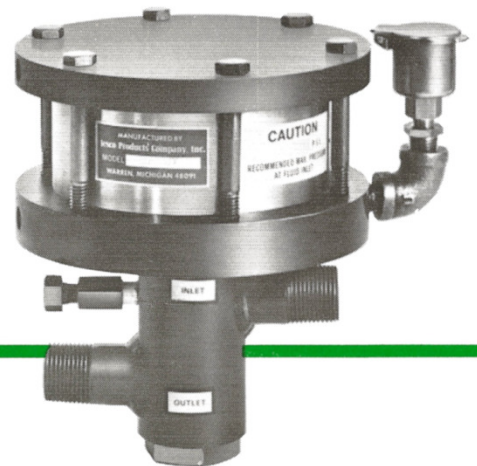
Typical Circuit



Model N-372



Model N-372-3



Model N-372-45

applicators

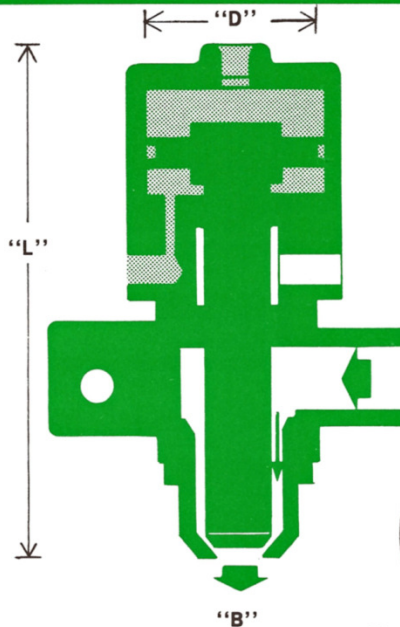
**Air Powered Liquid Flow Applicators
For a Wide Range of Viscosities**



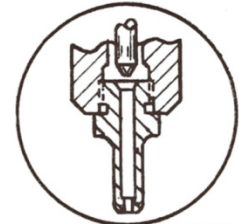
THE N-311 SERIES flow applicators are designed for rapid high volume dispensing and can be readily mounted at the point of application. Their rugged steel construction, combined with a teflon coated shaft and a hardened steel flush outlet, assures long trouble free operation.

THE N-527 SERIES flow applicators are compact tools of steel and aluminum construction. They are easily adaptable to a stationary mount, a traveling mechanical arm, or can be used as a hand held stylus type applicator at the end of a flexible hose.

They are standard with a quick change nozzle. A range of small diameter orifices makes the N-527 a versatile tool, ideally suited to small bead, low volume applications.



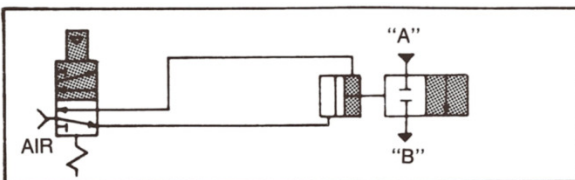
Note: See chart for available orifices



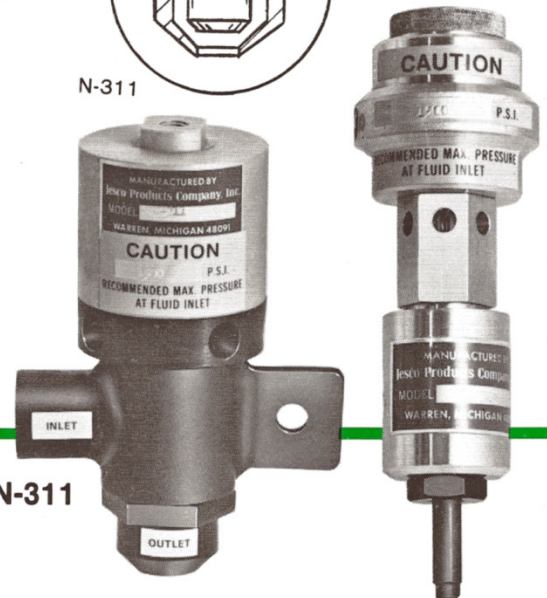
N-527



N-311



Typical Circuit



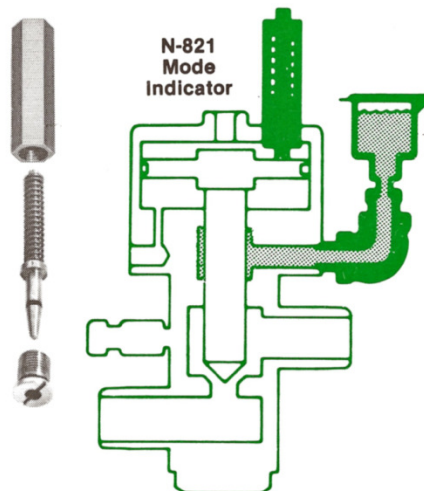
Model N-311

Model N-527

accessories

PART NO. N-821 MODE INDICATOR
This offers a visual aid to indicate the operational mode. The air piston actuates the spring return indicator. This design lends itself to quick trouble shooting of the valve in sophisticated systems. Available on all models.

PART NO. P-5515 WET SEAL
A "wet main seal" design is offered on all valves where moisture sensitive materials are being dispensed. This provision lubricates and prevents "varnishing" of the valve shaft, and extends seal life.



P-5515
Wet Seal
Design

Consult Jesco for timers and various other flow valve controls.

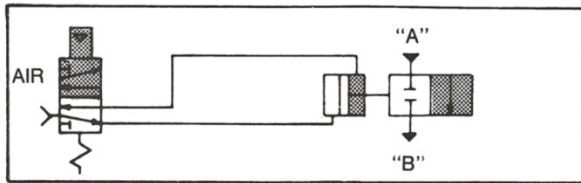
special application

Air Power Operated Flow Valves Designed For Special Functions

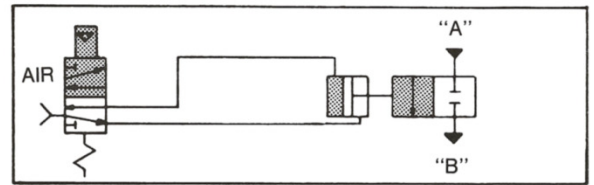
THE N-853-3 AND THE N-854-3 SERIES inlet check valves were designed specifically for use on positive piston displacement metering pumps. The high volume flow and rapid powered response of this valve out performs the conventional ball check inlet. This improved method offers peak pump efficiency where ball checks have failed. A pivot tab for clevis mounting is standard on Model N-853-3 Series.

THE N-912 SERIES injection valves are designed to inject a pressurized, low volume flow of material into any limited access mold or cavity. This valve is commonly used in the Jesco two component urethane dispensing system for windshield applications which requires a 79:1 ratio.

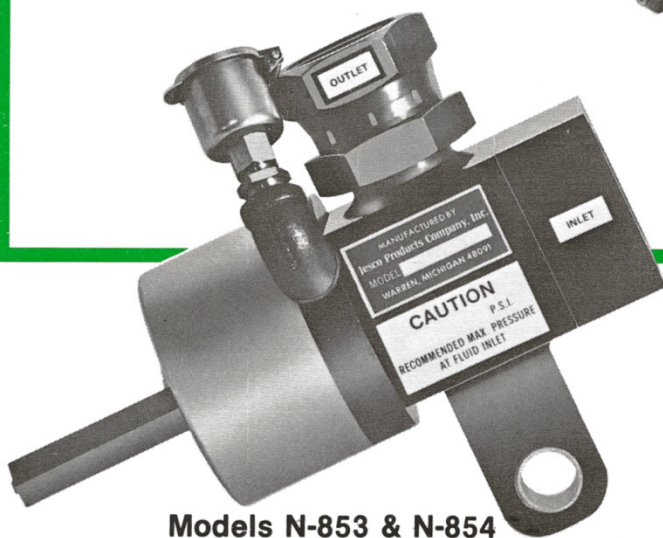
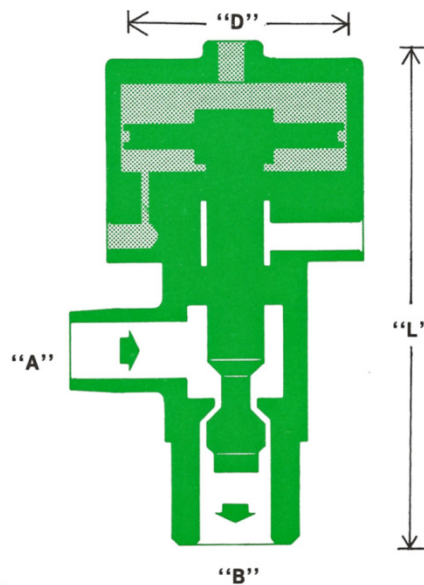
THE N-949 SERIES flow valves are constructed of hardened steel components. The closing function makes it ideal for flowing a liquid or paste material into a mixer. The reverse action causes a "draw back" effect, preventing a surge of material upon close.



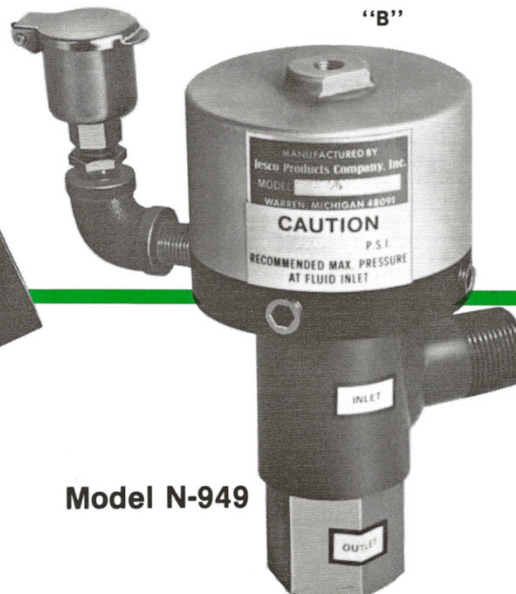
N-912, N-853 & N-854 Typical Circuit



N-949 Typical Circuit



Models N-853 & N-854



Model N-949



Model N-912

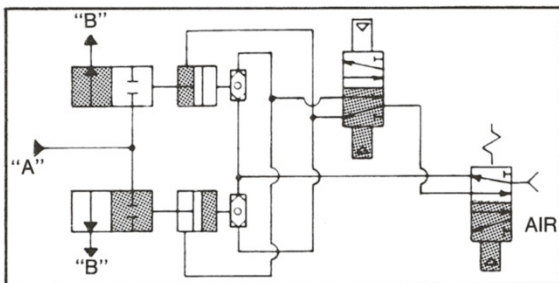
3 way flow valves



Directional Control of Liquid and Paste

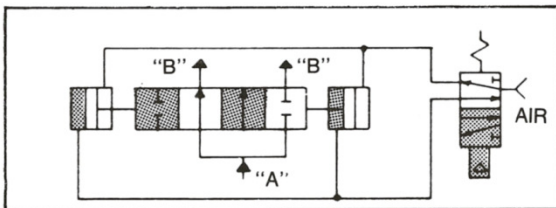
THE N-1087 SERIES 3 WAY FLOW VALVES are of rugged hardened steel construction. This Jesco valve directs high volume flow rates of high viscosity material to alternate locations. Ideal for one pump, two station applications.

Typical control circuits are shown for alternate flow direction. Simultaneous circuitry can be applied.

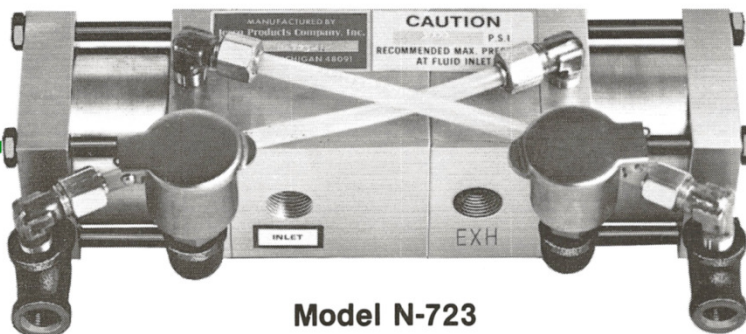
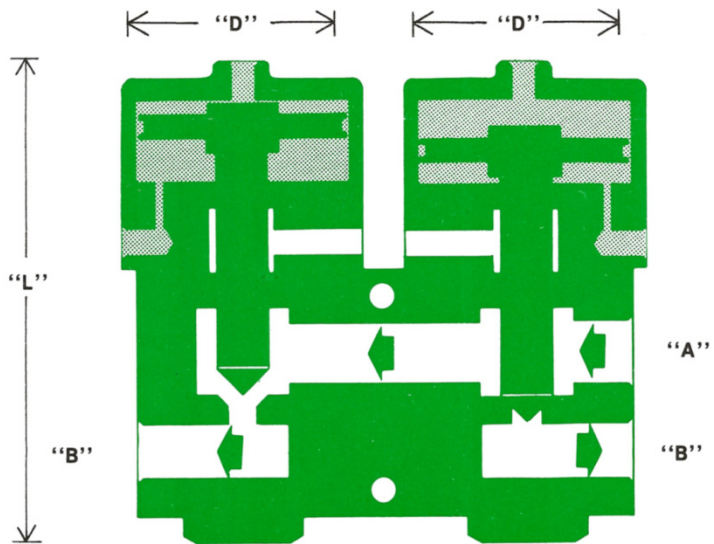


N-1087 Typical Circuit

MODEL N-723 SERIES 3 WAY DIRECTIONAL VALVES are of aluminum and steel construction. Flow can be diverted in the same manner as the N-1087 series. Typically used for moderate volume flow, low pressure applications.



N-723 Typical Circuit



Model N-723



Model N-1087

how to order

Add following suffixes to main valve model number for ordering other than standard.

MAIN SEALS	POSITION INDICATOR	MOISTURE PROTECTION	SHUT-OFF SEATS
V = VITON EP = ETHELENE PROPYLENE (BUTYL) U = URETHANE T = TEFLON	M = MODE INDICATOR (Standard on N-853-3 & N-854-3 Series.)	W = WET MAIN SEAL (Standard on N-372-45, N-853-3, N-854-3 & N-949 Series.)	A = SOFT SEAT DESIGN (Metal to metal Shut-offs are standard.) SPECIAL CONSTRUCTION SS = STAINLESS STEEL

EXAMPLE N-372-3 V W M
 Model No. VITON WET MODE
 SEAL SEAL INDICATOR

BACK PRESSURE LIMITS

$$\frac{\text{Down Stream Pressure}}{\text{Power Ratio Factor}} = * \text{Air Operating Pressure (Min. Required)}$$

* Add 25% for Positive Operation

APPLICATOR ORIFICES

MODEL NO.	STANDARD	AVAILABLE RANGE
N-311	1/2 DIA.	1/4 to 5/8 DIA.
N-527	3/32 DIA.	1/32 to 3/16 DIA.

The proper seal selection is important for long service free operation. Consult your Jesco representative for recommendations.

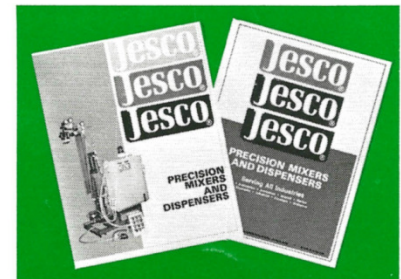
NOTE: Deviation's from standard must be specified.

	MODEL NO.	MATERIAL INLET MAX. RECOMMENDED	"L" LENGTH	STANDARD MAIN SEAL	"D" CYL. DIA.	POWER RATIO FACTOR	PORT "A" INLET	PORT "B" OUTLET
FLOW VALVES Page 2 - 4	N-372	3000 P.S.I.	6 3/4"	URETHANE	2"	7	3/4" NPT	3/4" NPT
	N-372-3	3000 P.S.I.	6 3/4"	URETHANE	3"	16	3/4" NPT	3/4" NPT
	N-372-45	3000 P.S.I.	7"	URETHANE	4 1/2"	36	3/4" NPT	3/4" NPT
	N-388	2500 P.S.I.	8 7/8"	URETHANE	1 1/8"	20	1/4" NPT	1/8" NPT
	N-500	3000 P.S.I.	5 1/8"	URETHANE	2"	20	3/8" NPT	3/8" NPT
	N-511	3000 P.S.I.	9 1/2"	URETHANE	2"	20	3/8" NPT	3/8" NPT
	N-550	1000 P.S.I.	8 7/8"	URETHANE	1 1/8"	20	3/8" NPT	3/8" NPT
	N-961	2500 P.S.I.	6"	URETHANE	1"	16	1/4" NPT	1/4" NPT
	N-963	1500 P.S.I.	6 3/16"	VITON	1 1/4"	25	1/4" NPT	1/4" NPT
APPLICATORS Page 5	N-527	1500 P.S.I.	6 1/4"	VITON	1"	16	1/4" NPT	3/32" DIA.
	N-311	1500 P.S.I.	5 3/4"	VITON	2"	7	1/2" NPT	1/2" DIA.
SPECIAL APPLICATION FLOW VALVES Page 6	N-853-3	200 P.S.I.	6 5/8"	VITON	3"	5.5	1 1/4" NPT	1 1/4" JIC
	N-854-3	200 P.S.I.	6 5/8"	VITON	3"	5.5	1 1/4" NPT	1 1/4" JIC
	N-912	1500 P.S.I.	7 1/4"	VITON	1"	16	1/4" NPT	1/16" DIA.
	N-949	2500 P.S.I.	6 5/8"	VITON	3"	33	3/4" NPT	3/4" NPT
3 WAY FLOW VALVES Page 7	N-723	2000 P.S.I.	8 3/4"	URETHANE	2"	20	3/8" NPT	3/8" NPT
	N-1087	3000 P.S.I.	6 3/4"	VITON	3"	16	3/4" NPT	3/4" NPT

WARRANTY

The tools in this catalog are warranted to be free from defects in workmanship under normal use and service for a period of ninety (90) days after the sale of the product by Jesco Products. Jesco Products sole obligation under this Warranty shall be to repair or replace any defective product or parts thereof, which are returned to Seller's factory, transportation charges prepaid within the period mentioned above, and which upon examination are proved to Seller's satisfaction to be defective. The Warranty shall not apply to any product or part which has been subject to misuse, negligence or accident. The Seller shall not be responsible for any special or consequential damages and the Warranty as set forth is in lieu of all other warranties either expressed or implied.

HOWEVER, SELLER MAKES NO WARRANTY OF MERCHANTABILITY IN RESPECT OF ANY OF THE GOODS OFFERED IN THIS CATALOG FOR ANY PARTICULAR PURPOSE OTHER THAN THAT STATED IN THIS CATALOG AND ANY APPLICABLE MANUFACTURER'S SHOP OR SERVICE MANUALS REFERRED TO THEREIN, INCLUDING ANY SUBSEQUENT SERVICE BULLETINS.



The Jesco valve line was designed, developed and fine tuned as an important component part of the Jesco metering, mixing and dispensing systems of two component resin reactive materials. We invite you to send for additional Jesco literature covering your other dispensing applications.

